



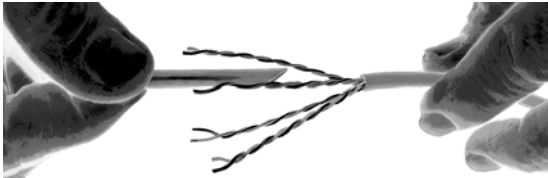
EZ-RJ45® Instructions

For use with EZ-RJ45®
Cat 5e & Cat 6 Connectors.

1. Strip off approximately two inches of outer cable jacket.



2. Untwist & straighten wires.



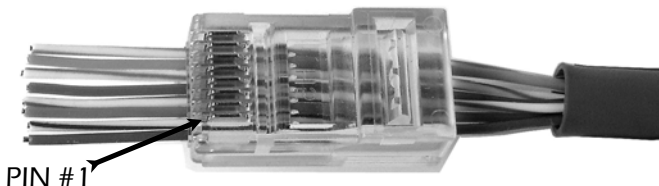
Place in desired order.
See color code wiring chart. (5)



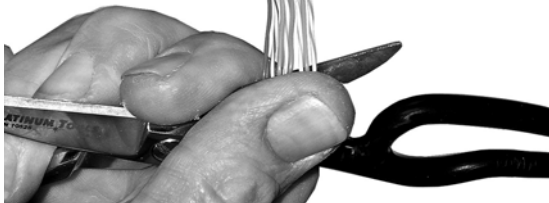
3. Trim wire ends so all conductors are equal length and uniform. Use built in wire cutter in EZ-RJ45® Crimp Tool.



4. Insert wires into the EZ-RJ45® Connector and pull connector down over the cable jacket. Cable jacket should seat snugly in rear of connector.



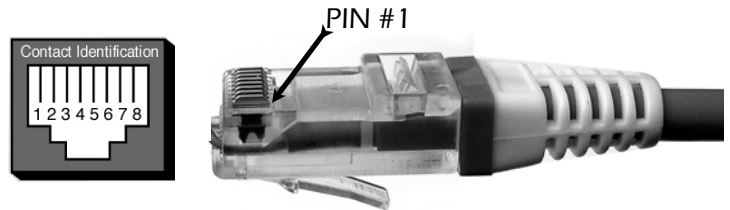
PIN #1



5. Double check wiring sequence now.

T568A/T568B Wiring

Wire #	1	2	3	4	5	6	7	8
T568A	W/G	G	W/O	BL	W/BL	O	W/BR	BR
T568B	W/O	O	W/G	BL	W/BL	G	W/BR	BR



6. Push the EZ-RJ45® connector into the EZ-RJ45® Crimp Tool. Make sure the connector is fully seated in crimp cavity.

7. Actuate the EZ-RJ45® Tool to crimp and trim wires. Break off any remaining loose wires.

P/N 100044



P/N 100004



EZ-RJ45® is a registered trademark of SullStar Technologies Inc.
Patented: 5,996,224, 6,017,237, 6,105,229. Patents insured.



www.lextec.com

Authorized Canadian Distributor