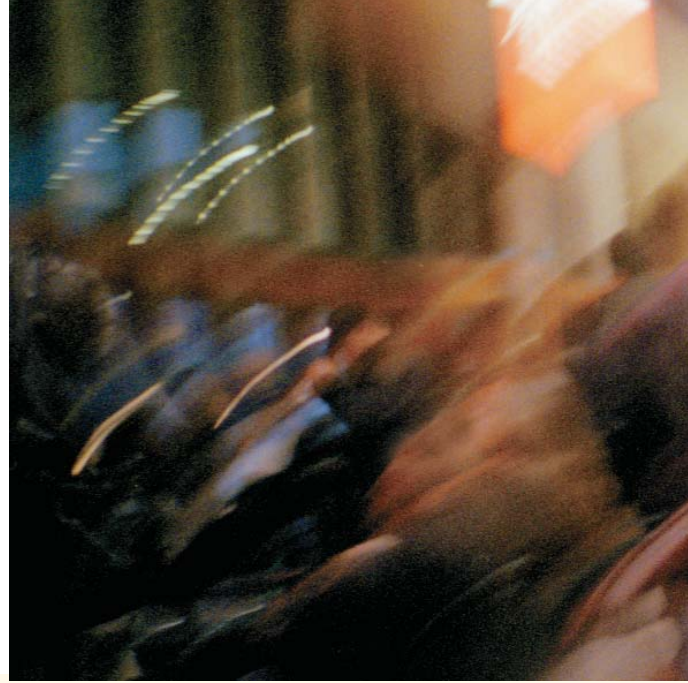




SwitchView®

Control your entire desktop with
SwitchView KVM switches

THE EASE OF
KVM Switching



Avocent SwitchView desktop KVM switches offer the most complete KVM switching features for today's desktop.

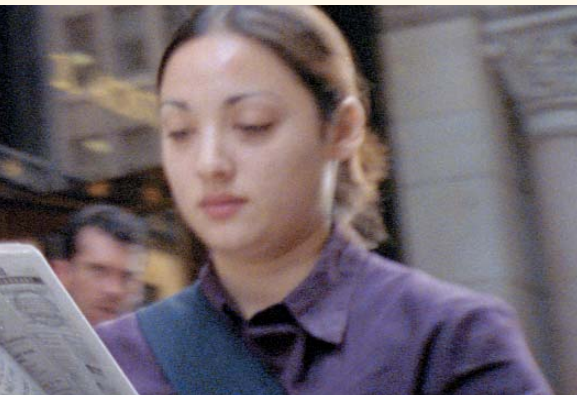
With compact, space-saving designs, these switches let you easily share access to multi-platform computers, and other desktop devices. You can even connect your digital cameras, PDAs, printers and scanners to a single switch. The SwitchView series of switches adds control and flexibility to your desktop.





SwitchView Desktop Switches at a Glance

	Users	Computers	Platforms	Resolution	Key Features
SwitchView PC	Single	2	PC	2048 x 1536	Multiple PS/2 Computers
SwitchView PC	Single	4	PC	2048 x 1536	Multiple PS/2 Computers
SwitchView Multimedia (USB 1.1)	Single	2	PC and USB	2048 x 1536	Multiple PS/2 or USB Computers Audio support speakers and microphone
SwitchView Multimedia (USB 1.1)	Single	4	PC and USB	2048 x 1536	Digital Cameras, PDAs, Scanners, Printers, CD-ROMS
SwitchView Multimedia (USB 2.0)	Single	2	PC and USB	2048 x 1536	Digital Cameras, PDAs, Scanners, Printers, CD-ROMS
SwitchView Multimedia (USB 2.0)	Single	2	PC and USB	2048 x 1536	Digital Cameras, PDAs, Scanners, Printers, CD-ROMS
SwitchView DVI (USB 2.0)	Single	2	USB	1920 x 1200	DVI Monitors, Flat Panel Displays
SwitchView DVI (USB 2.0)	Single	4	USB	1920 x 1200	DVI Monitors, Flat Panel Displays



**SwitchView
Multimedia
switch**

SwitchView

Product Series



SwitchView PC switch

The Avocent **SwitchView PC** KVM desktop switches let you control up to four PS/2 computers from one keyboard, monitor and mouse. Lighted LED indicates which computer you are accessing and audible indicators confirm channel switching. With color-coded cables for easy installation, customizable channel selections and error-free boot-up, the SwitchView PC switch offers you a complete desktop KVM solution.

SwitchView PC Highlights

- Switch through push-button or through keyboard hotkey sequence
- Auto scan among connected computers to monitor each computer's operating status
- Color-coded cables and connectors make installation quick and easy
- Error-free boot-up with keyboard and mouse emulation
- Available in 2 and 4-port models
- Supports up to four PS/2 computers
- Backed by Avocent 2 year warranty and technical support

SwitchView Desktop KVM Switches

Save space, time and money.

SwitchView KVM desktop switches let you control up to four computers from one keyboard, monitor and mouse.





SwitchView DVI switch

The **SwitchView DVI (Digital Visual Interface)** KVM switches feature 1920 x 1200 video resolution and deliver crisp images for your high-end displays and flat panel monitors. The versatile SwitchView DVI KVM switch is available in 2 and 4-port models. It easily manages up to four USB DVI computers from a single USB keyboard, mouse and DVI monitor.

SwitchView DVI Highlights

- Supports high-end applications using DVI monitor or flat panel and USB PCs, Mac G3/G4, iMac
- 1920 x 1200 video resolution is ideal for desktop graphical applications
- Use push-button or multiple keyboard hotkeys for customized channel selections
- Configurable scanning among computers to monitor each computer's operating status
- Includes two USB 2.0 hub ports
- Provides independent switching of KVM and USB hub ports
- Audio support for speakers and microphones
- Backed by Avocent 2 year warranty and technical support



SwitchView Multimedia switch

The all-in-one **SwitchView MM (Multimedia)** desktop KVM switches let you switch between USB or PS/2 systems, share your USB devices and control multimedia applications. With one SwitchView Multimedia switch, you can control multiple PCs and share access to your USB devices: digital camera, CD-ROM, PDA, scanner or printer. The SwitchView Multimedia KVM switches are available in 2 and 4 port models, with USB 1.1 and USB 2.0 support.

Note: The SwitchView Multimedia 2 port model with USB 1.1 support does not include the hub feature.

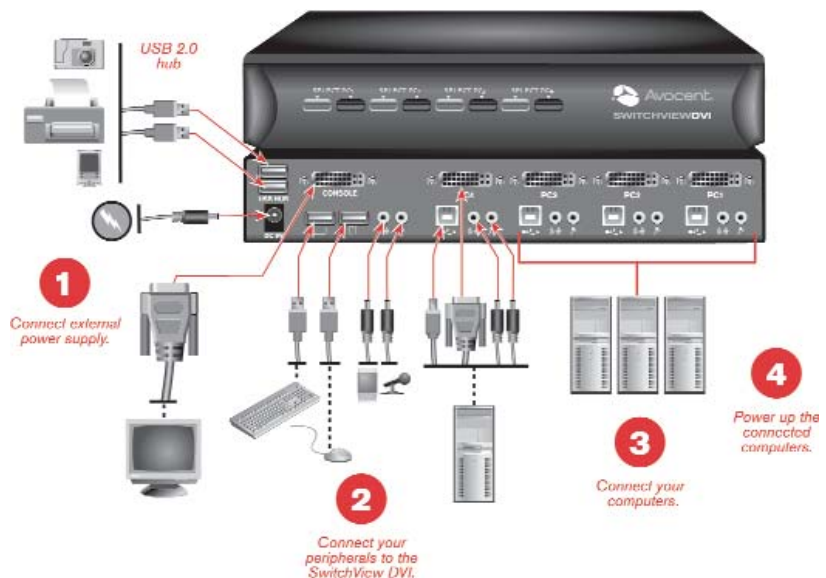
SwitchView MM1 Highlights

- Provides high 2048 x 1536 video resolution
- Push-button or hotkey switching for channel selections
- Configurable scanning among computers to monitor each computer's operating status
- Audio support for speakers and microphones
- USB or PS/2 system support
- Available in 2 and 4-port models with USB 1.1 support
- Backed by Avocent 2 year warranty and technical support

SwitchView MM2 Highlights

- Includes a USB 2.0 built-in hub
- Provides high 2048 x 1536 video resolution
- Push-button or configurable hotkey switching for channel selections
- Configurable scanning among computers to monitor each computer's operating status
- Audio support for speakers and microphones
- USB or PS/2 system support
- Independent switching of KVM and USB hub ports
- USB multimedia keyboard support
- Available in 2 and 4-port models
- Backed by Avocent 2 year warranty and technical support

SwitchView KVM switches include a space-saving design to fit your multi-tasking desktop. Color-coded cables and connectors make your installation fast and easy!



SwitchView PC

SwitchView DVI

SwitchView MM1

SwitchView MM2

Ordering Information

SWITCH	
SwitchView PC	
2SVP10-001	2-port PS/2 system/console
4SVP10-001	4-port PS/2 system/console
SwitchView MM1	
2SVPUA10-001	2-port PS/2 USB system/console USB 1.1 hub, audio
4SVPUA10-001	4-port PS/2 USB system/console USB 1.1 hub, audio
SwitchView MM2	
2SVPUA20-001	2-port PS/2 USB system/console USB 2.0 hub, audio
4SVPUA20-001	4-port PS/2 USB system/console USB 2.0 hub, audio
SwitchView DVI	
2SVDVI10-001	2-port USB system/console USB 2.0 hub, audio
4SVDVI10-001	4-port USB system/console USB 2.0 hub, audio

CABLES	
SwitchView PC	
SVP-6	6 feet PS/2 cable kit
SVP-9	9 feet PS/2 cable kit
SwitchView MM1/MM2	
SVUSB-6	6 feet PS/2 USB audio cable kit
SVUSB-9	9 feet PS/2 USB audio cable kit
SwitchView DVI	
SVDVI-6	6 feet DVI USB audio cable kit
SVDVI-9	9 feet DVI USB audio cable kit

ACCESSORIES	
SwitchView PC	
SVEPS-001	9V DC @1A external transformer optional for SwitchView PC switch

Switch Specifications

SwitchView PC				
MECHANICAL	Height	Width	Depth	Weight
2SVP10	1.7 in (4.3 cm)	5.0 in (12.7 cm)	3.0 in (7.62 cm)	1 lb (.45 kg)
4SVP10	1.7 in (4.3 cm)	8.0 in (20.32 cm)	3.0 in (7.62 cm)	2 lbs (.90 kg)
ENVIRONMENTAL / POWER / HARDWARE				
Power Frequency	9V DC @1A external transformer			
Supported Hardware - Computer	PS/2			
Supported Hardware - Monitor	(VGA, SVGA, XGA, QVGA, SXGA, UXGA, QXGA) Maximum resolution 2048 X 1536			
Supported Hardware - Peripherals	PS/2 keyboard, PS/2 mouse, Intellimouse (PS/2 only), IBM Scroll Point, Logitech 2 Button, Logitech Trackball Scroller, Microsoft Trackball Scroller, Microsoft Scroller, Microsoft Intelleye Five Button			
STANDARDS				
Approved Agency	En55022 Class B, EN55024,61000-3-2,6100-3-3, FCC 15 Class B, CE			

SwitchView DVI				
MECHANICAL	Height	Width	Depth	Weight
2SVDVI10	1.7 in (4.3 cm)	6.5 in (16.51 cm)	4.0 in (10.16 cm)	2 lbs (.90 kg)
4SVDVI10	1.7 in (4.3 cm)	10 in (25.4 cm)	4.6 in (11.68 cm)	3 lbs (1.36 kg)
ENVIRONMENTAL / POWER / HARDWARE				
Power Frequency	9V DC @1A external transformer			
Supported Hardware - Computer	USB (2.0)			
Supported Hardware - Monitor	DVI - Maximum resolution 1920 X 1200			
Supported Hardware - Peripherals	USB (2.0) keyboard and mouse			
STANDARDS				
Approved Agency	En55022 Class B, EN55024,61000-3-2,6100-3-3, FCC 15 Class B, CE			

SwitchView MM1				
MECHANICAL	Height	Width	Depth	Weight
2SVPUA10	1.7 in (4.3 cm)	5.5 in (13.97 cm)	3.5 in (8.89 cm)	1 lb (.45 kg)
4SVPUA10	1.7 in (4.3 cm)	8.7 in (22.09 cm)	4.0 in (10.16 cm)	2 lbs (.90 kg)
ENVIRONMENTAL / POWER / HARDWARE				
Power Frequency	9V DC @1A external transformer			
Supported Hardware - Computer	PS/2			
Supported Hardware - Monitor	(VGA, SVGA, XGA, QVGA, SXGA, UXGA, QXGA) Maximum resolution 2048 X 1200			
Supported Hardware - Peripherals	PS/2 keyboard, PS/2 mouse, Intellimouse (PS/2 only), IBM Scroll Point, Logitech 2 Button, Logitech Trackball Scroller, Microsoft Trackball Scroller, Microsoft Scroller, Microsoft Intelleye Five Button			
STANDARDS				
Approved Agency	En55022 Class B, EN55024,61000-3-2,6100-3-3, FCC 15 Class B, CE			

SwitchView MM2				
MECHANICAL	Height	Width	Depth	Weight
2SVPUA20	1.7 in (4.3 cm)	5.5 in (13.97 cm)	3.5 in (8.89 cm)	1 lb (.45 kg)
4SVPUA20	1.7 in (4.3 cm)	8.7 in (22.09 cm)	4.0 in (10.16 cm)	2 lbs (.90 kg)
ENVIRONMENTAL / POWER / HARDWARE				
Power Frequency	9V DC @1A external transformer			
Supported Hardware - Computer	PS/2			
Supported Hardware - Monitor	(VGA, SVGA, XGA, QVGA, SXGA, UXGA, QXGA) Maximum resolution 2048 X 1536			
Supported Hardware - Peripherals	PS/2 keyboard, PS/2 mouse, Intellimouse (PS/2 only), IBM Scroll Point, Logitech 2 Button, Logitech Trackball Scroller, Microsoft Trackball Scroller, Microsoft Scroller, Microsoft Intelleye Five Button			
STANDARDS				
Approved Agency	En55022 Class B, EN55024,61000-3-2,6100-3-3, FCC 15 Class B, CE			

THE EASE OF KVM Switching



SwitchView PC

Easily control up to four PS/2 computers from one keyboard, monitor and mouse.



SwitchView Multimedia

Switch between USB or PS/2 systems, share your USB devices and control multimedia applications.



SwitchView DVI

Manage up to four USB DVI computers from a single USB keyboard, mouse and DVI monitor.

About Avocent

Avocent is the leading global provider of KVM switching and network connectivity solutions with more than two decades of experience in providing KVM switching, remote access and serial connectivity solutions. KVM switching systems eliminate the need for extra keyboards, monitors and mice and allow businesses to save critical space on the desktop and in data centers.

Avocent KVM and related solutions are installed in home offices, small businesses, Fortune 100 companies and other client sites around the world. Customers include Microsoft Corp., Intel, HP, Dell, Time Warner, GE, Exxon Mobile, FedEx and Home Depot, among others.

Avocent stock is traded as AVCT on the NASDAQ Stock Market. More information on Avocent is available at www.avocent.com.